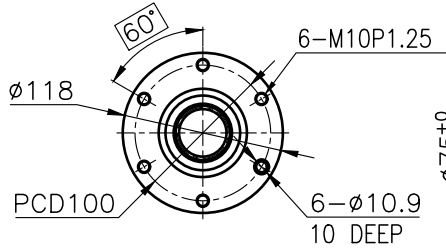
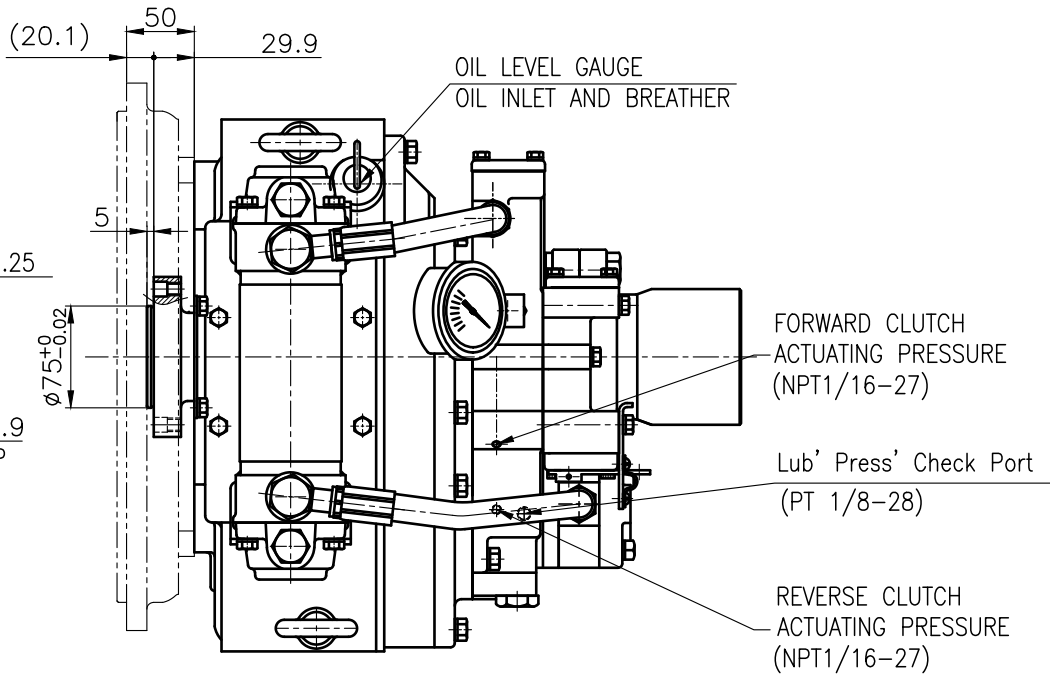


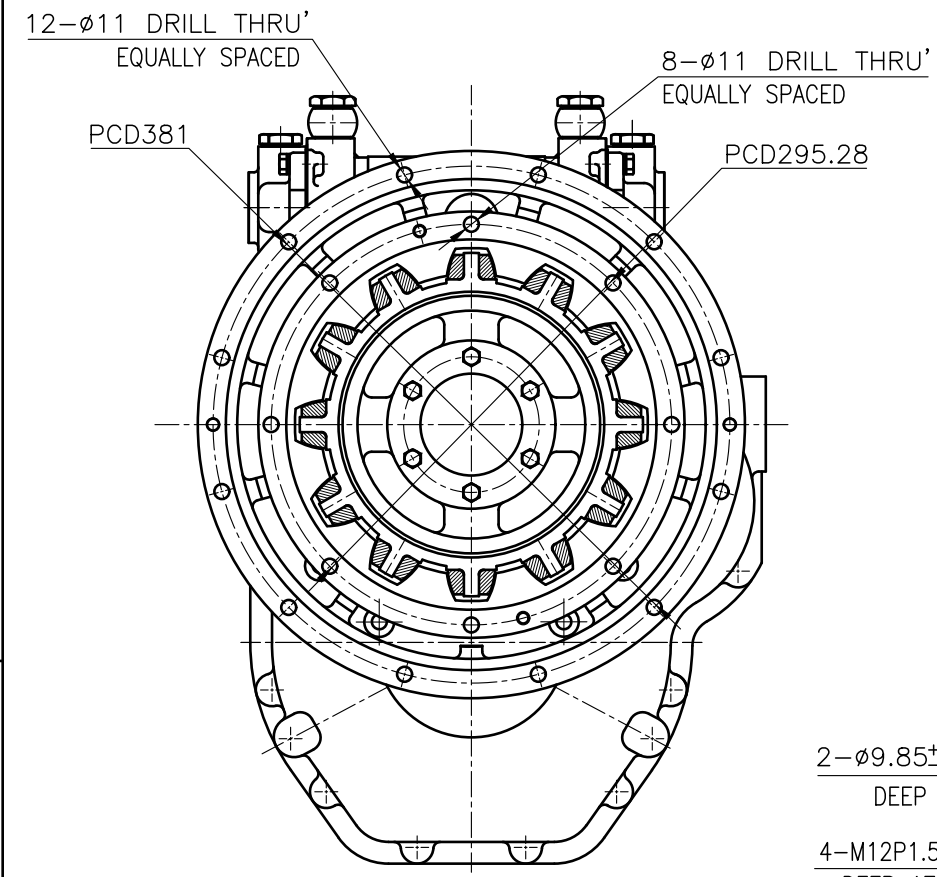
OUTPUT SHAFT COUPLING & PROPELLER COUPLING DIMENSION



INPUT COUPLING DIMENSION

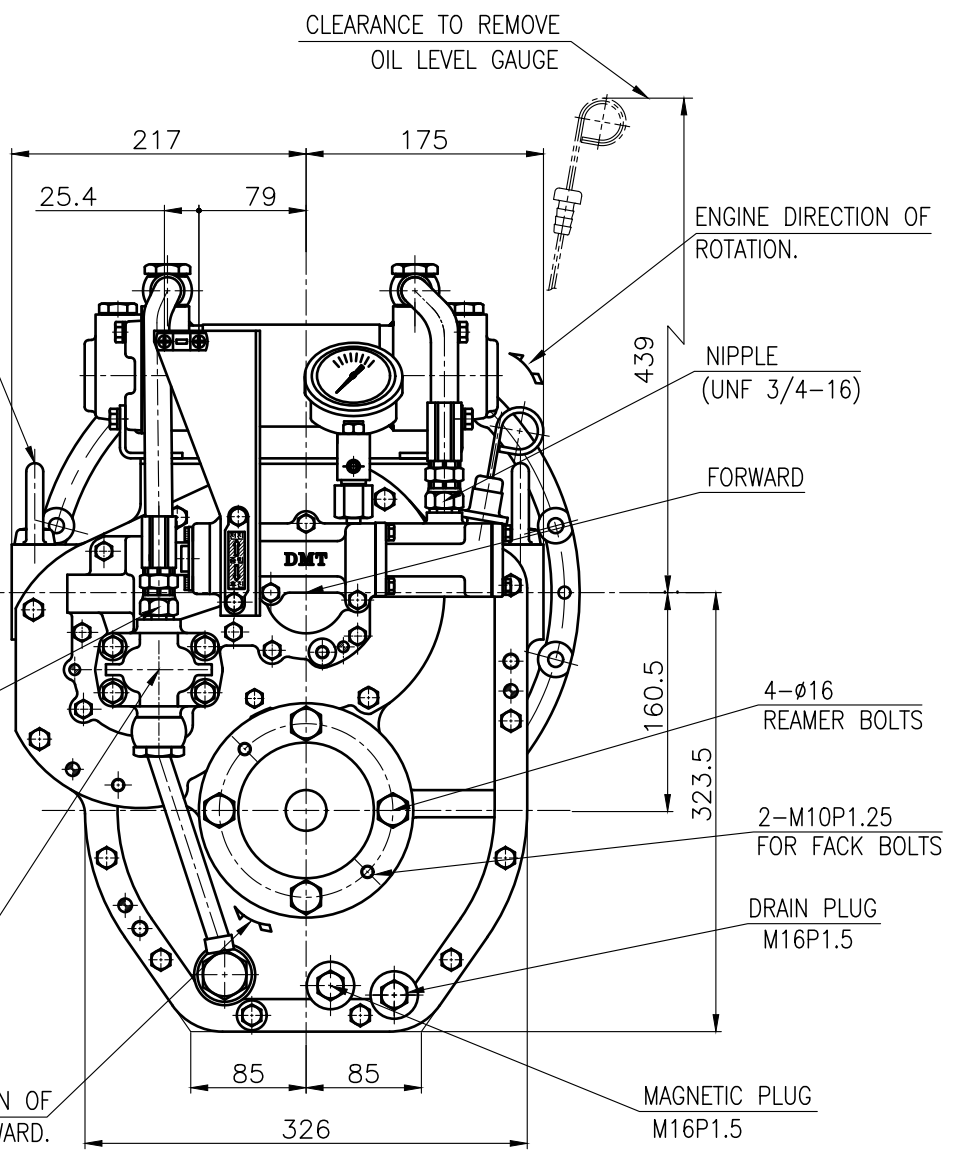
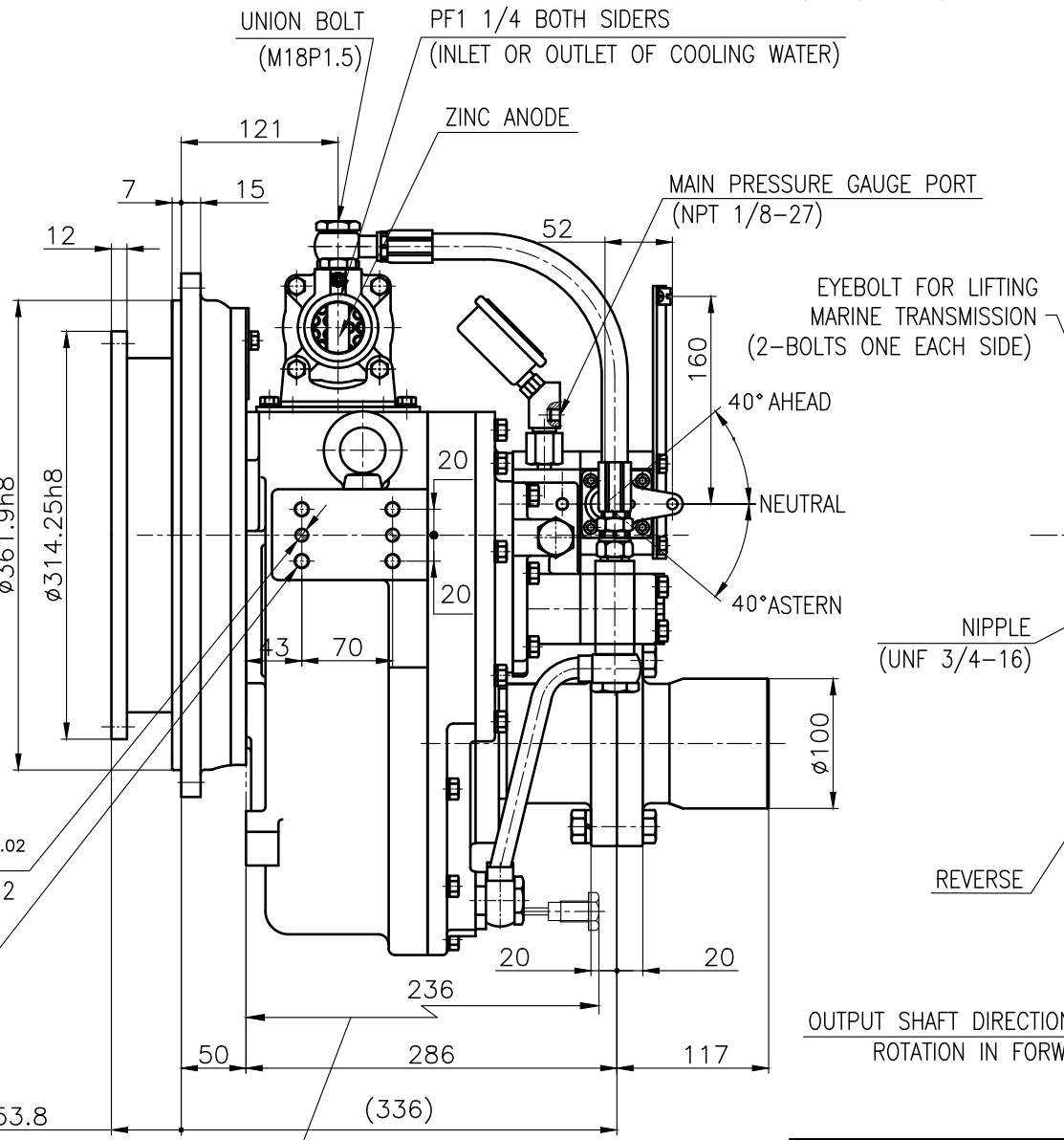


DMT 50A MARINE GEAR SPECIFICATION		
GEAR RATIO	1.61, 2.06, 2.45, 2.82, 3.12, 3.46	
TOTAL WEIGHT	APPROX. 143 kg(DRY)	
OIL CAPACITY	APPROX. 3L	
OIL VISCOSITY	SAE # 30	
OIL PRESSURE	1.96 ~ 2.54 MPa	CLUTCH OIL
DIRECTION OF ROTATION IN FORWARD	INPUT	C.C.W VIEWED FROM THE STERN
	OUTPUT	C.W VIEWED FROM THE STERN
OIL CHANGE INTERVAL	THE FIRST 100HOURS OF INITIAL OPERATION AND EVERY 1000HOURS THEREAFTER	
SHIFTING LIMIT	UNDER 50% OF THE RATED ENGINE SPEED	
OIL COOLER	WATER FLOW 40 ~ 60L/min	TEMPERATURE OF COOLING WATER MAX 32°C
OPERATING TORQUE OF SHIFTING LEVER	UNDER 2.94Nm	

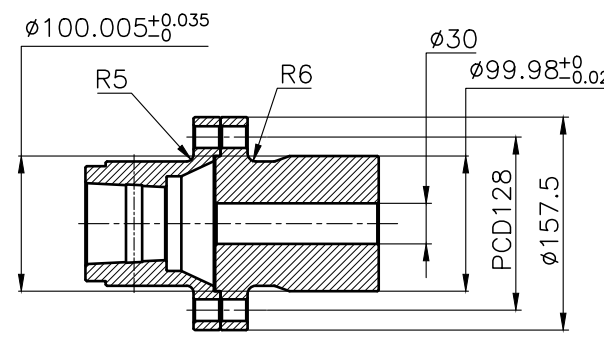


BRACKET DIMENSION

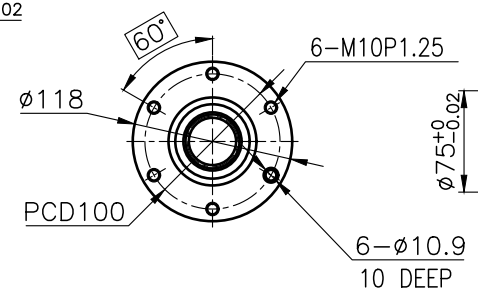
- REMARK
- HOUSING: SAE#4
 - DRIVING RING: SAE 10"
 - COUPLING TYPE : RUBBER
 - APPLICATION ENGINE : STANDARD



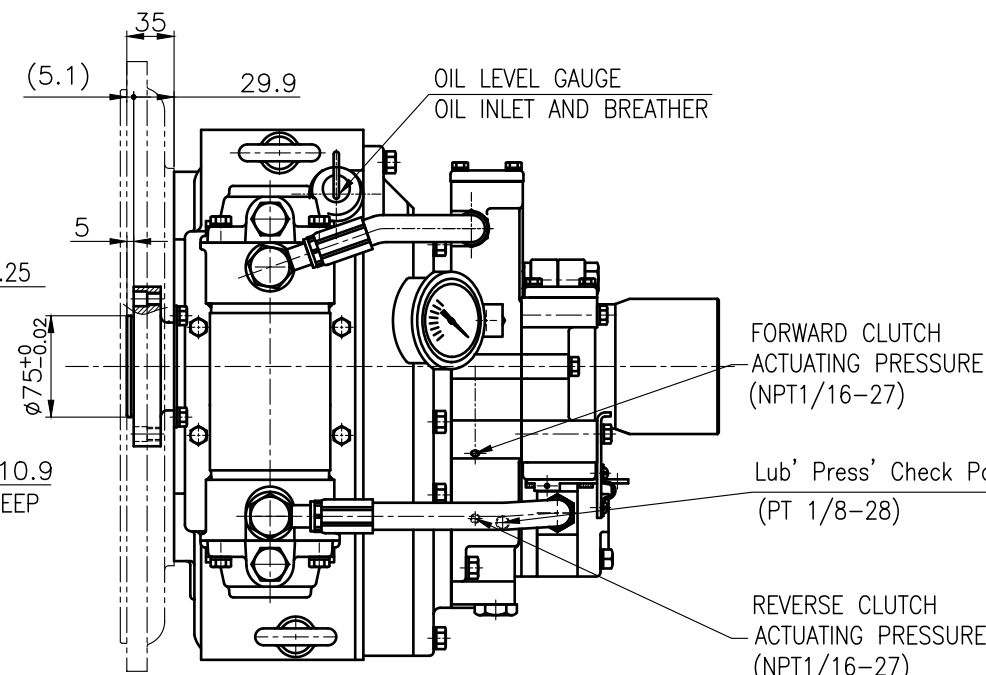
공통공차 TOLERANCE ON	번호 NO.	품 PART NO.	명 PART NAME	개수 Q'TY	재 MATERIAL	규 SIZE	비 REMARKS
분수 FRACTIONS	±	소수 DECIMALS	±	각도 ANGLES	°		
±	±	±	±				
재 MATERIAL		DATE 2018.06.20		척도 SCALE N/S		형 식 TYPE DMT50A	
APPROVED BY JK.Kim		CHECKED BY TH.Cha		DRAWN MA.Kim		명 명 NAME MARINE TRANSMISSION	
1 초과 4 이하 ± 0.3 ± 0.1 ± 0.05		4 16 ± 0.5 ± 0.2 ± 0.07		16 63 ± 0.7 ± 0.3 ± 0.1		도 DWG. NO. 050000A~F-410RC	
4 16 ± 0.5 ± 0.2 ± 0.07		16 63 ± 0.7 ± 0.3 ± 0.1		16 63 ± 0.7 ± 0.3 ± 0.1		개 형 (REV.) 000	
16 63 ± 0.7 ± 0.3 ± 0.1		16 63 ± 0.7 ± 0.3 ± 0.1		16 63 ± 0.7 ± 0.3 ± 0.1		기 기 SIZE A 3	
16 63 ± 0.7 ± 0.3 ± 0.1		16 63 ± 0.7 ± 0.3 ± 0.1		16 63 ± 0.7 ± 0.3 ± 0.1		코 드 번 호 CODE ID. NO.	
16 63 ± 0.7 ± 0.3 ± 0.1		16 63 ± 0.7 ± 0.3 ± 0.1		16 63 ± 0.7 ± 0.3 ± 0.1		D-I INDUSTRIAL	
16 63 ± 0.7 ± 0.3 ± 0.1		16 63 ± 0.7 ± 0.3 ± 0.1		16 63 ± 0.7 ± 0.3 ± 0.1		SHEET 1 OF 1	



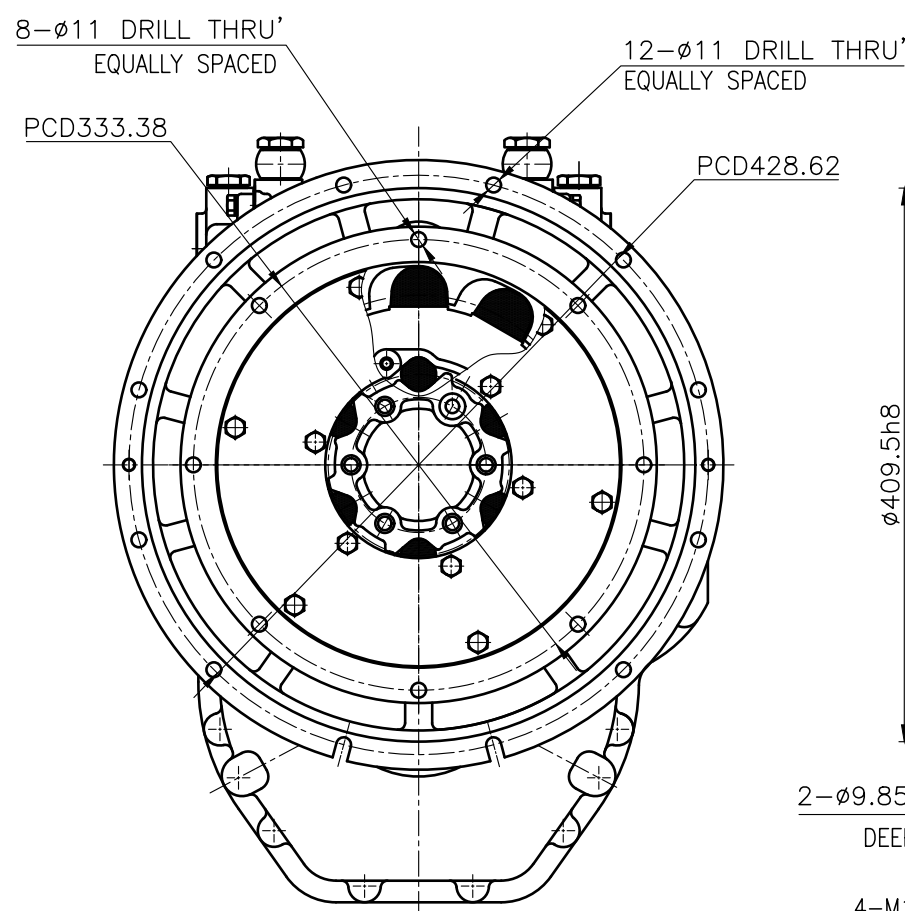
OUTPUT SHAFT COUPLING & PROPELLER COUPLING DIMENSION



INPUT COUPLING DIMENSION

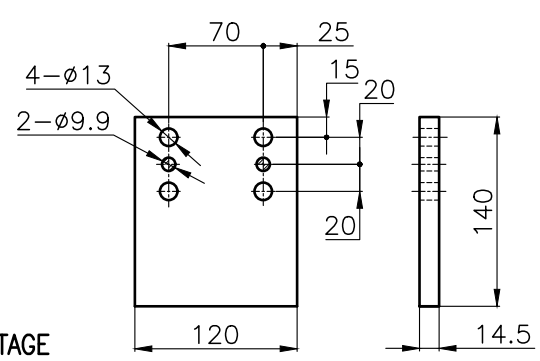


DMT 50A MARINE GEAR SPECIFICATION	
GEAR RATIO	1.61, 2.06, 2.45, 2.82, 3.12, 3.46
TOTAL WEIGHT	APPROX. 143 kg(DRY)
OIL CAPACITY	APPROX. 3L
OIL VISCOSITY	SAE # 30
OIL PRESSURE	1.96 ~ 2.54 MPa CLUTCH OIL
DIRECTION OF ROTATION	INPUT C.C.W VIEWED FROM THE STERN
IN FORWARD	OUTPUT C.W VIEWED FROM THE STERN
OIL CHANGE INTERVAL	THE FIRST 100HOURS OF INITIAL OPERATION AND EVERY 1000HOURS THEREAFTER
SHIFTING LIMIT	UNDER 50% OF THE RATED ENGINE SPEED
OIL COOLER	WATER FLOW 40 ~ 60L/min TEMPERATURE OF COOLING WATER MAX 32°C
OPERATING TORQUE OF SHIFTING LEVER	UNDER 2.94Nm

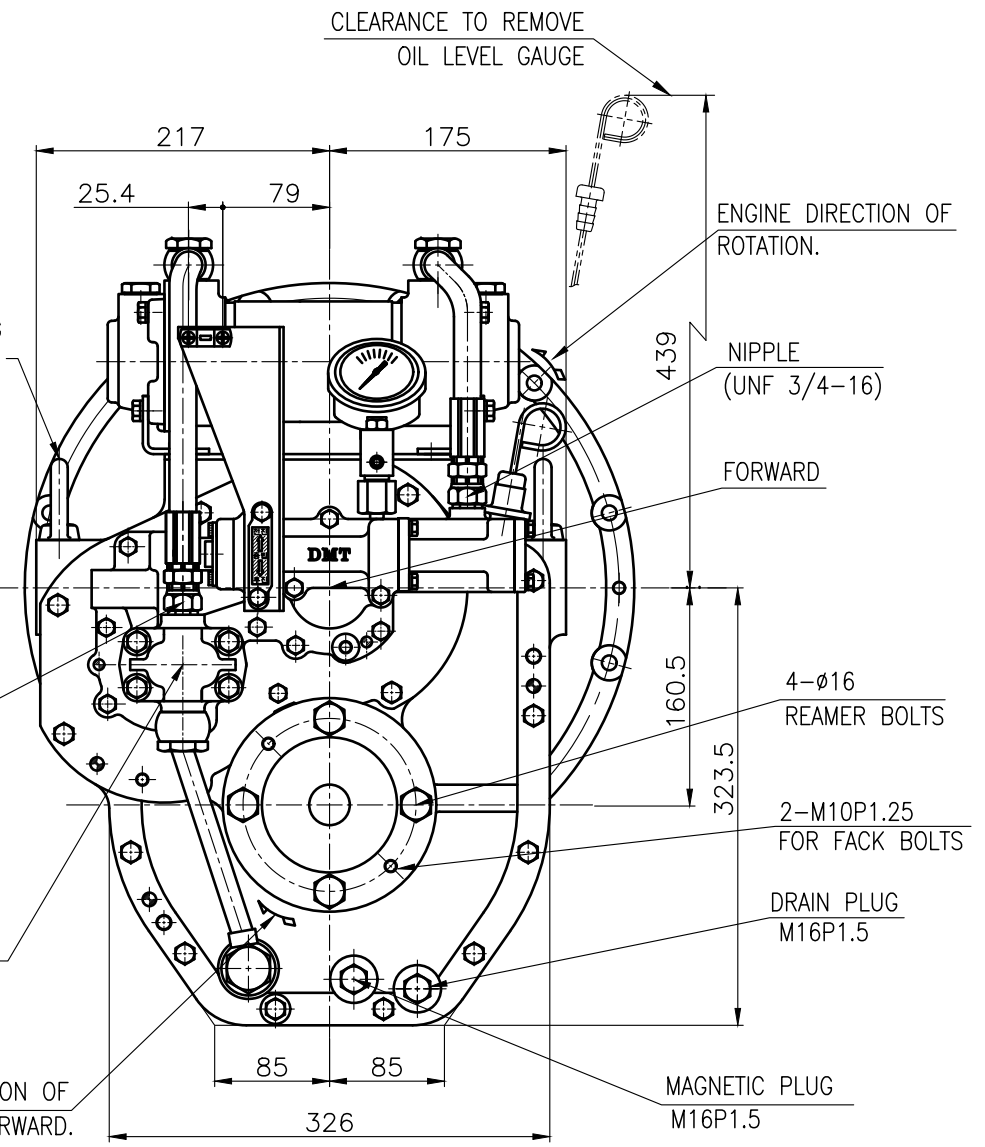
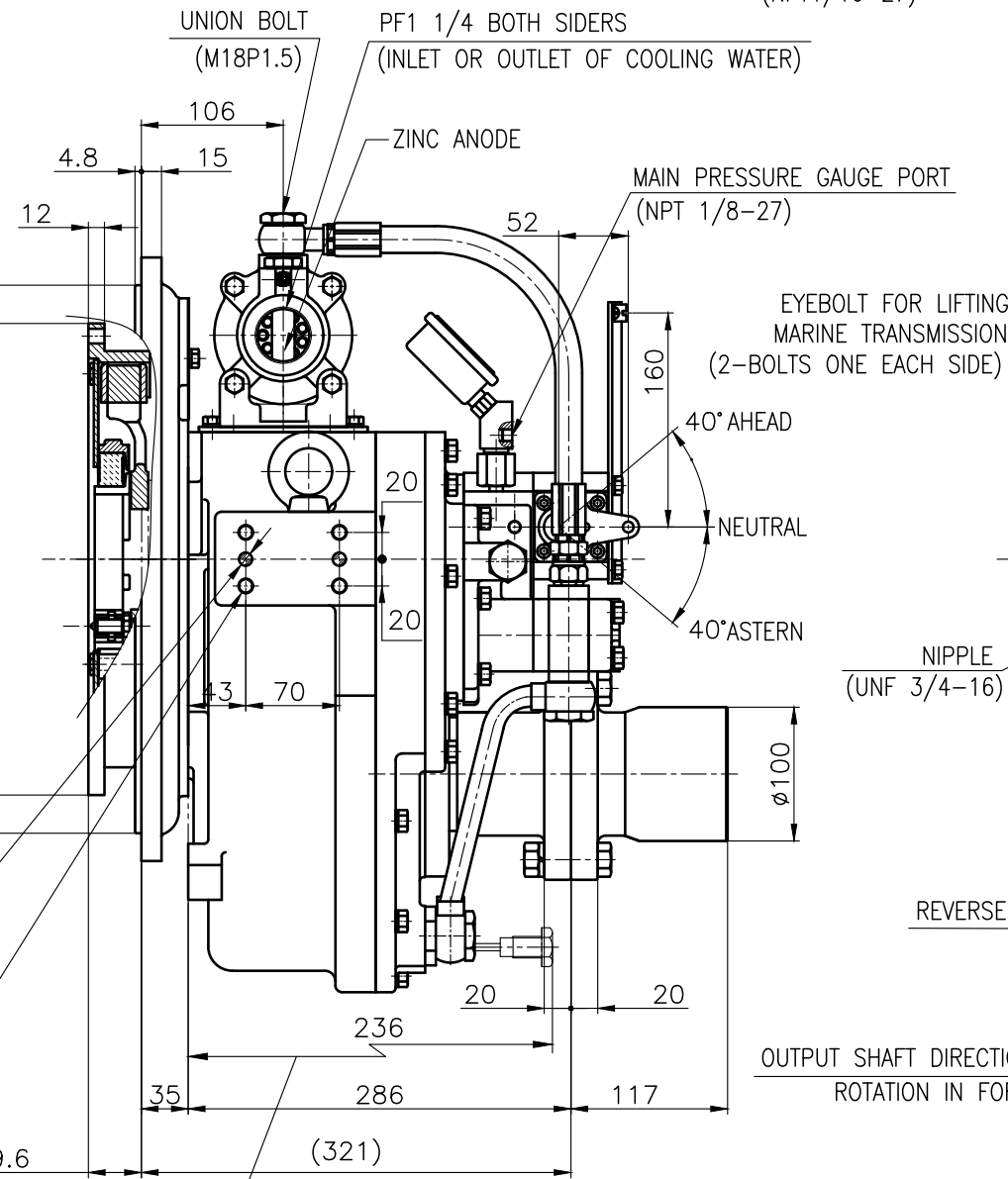


REMARK (HOT)

- 1.HOUSING: SAE#3
- 2.DRIVING RING: SAE 11.5"
- 3.COUPLING TYPE : DUAL STAGE
- 4.APPLICATION ENGINE : STANDARD



BRACKET DIMENSION



공통공차 TOLERANCE ON				번호 NO.	품 PART NO.	품 PART NAME	개수 Q'TY	재 MATERIAL	규 SIZE	비 REMARKS
분수 FRACTIONS	소수 DECIMALS	각도 ANGLES	公差 TOLERANCE	작성 DATE 2018.06.20		척도 SCALE N/S	형식 TYPE DMT50A		원도 번호 ORIGINAL DWG. NO.	
± 0.05	± 0.05	± 0.1	± 0.05	인 APPROVED BY JK.Kim	검 CHECKED BY TH.Cha	도 DRAWN MA.Kim	설 DESIGNED	품명 NAME MARINE TRANSMISSION		개정 (REV.) 000
1 초과 4 이하	± 0.3	± 0.1	± 0.05	도 DWG. NO. 050000A~F-3115DCH		크기 SIZE A 3		코드 번호 CODE ID. NO.		
4	± 0.5	± 0.2	± 0.07	D-I INDUSTRIAL						
16	± 0.7	± 0.3	± 0.1							
63	± 1.2	± 0.5	± 0.2							
250	± 2.0	± 0.8	± 0.3							

